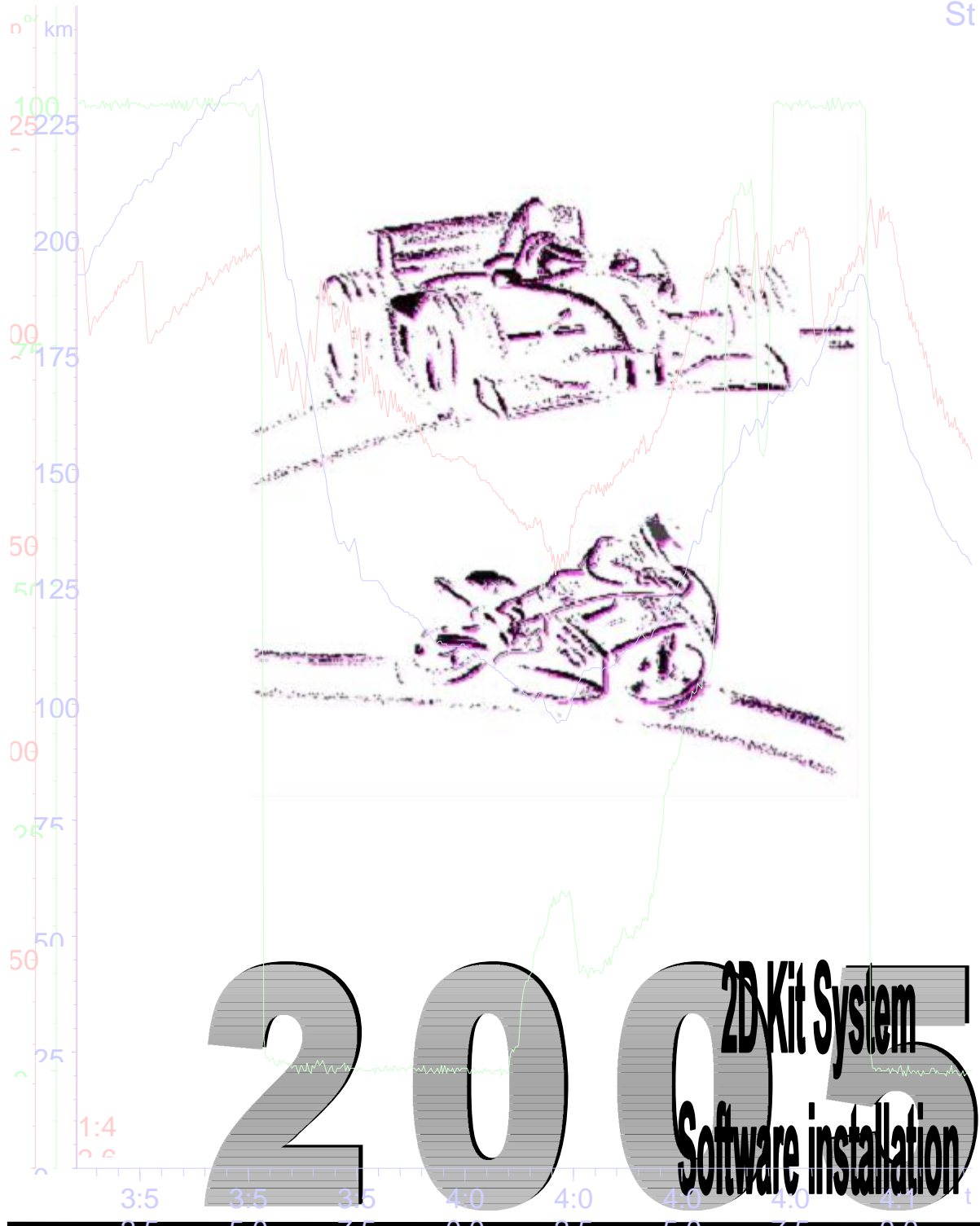




- English -

St



2005 2D Kit System Software installation

TABLE OF CONTENT

1. INSTALLATION OF THE 2D KIT SYSTEM SOFTWARE.....	3
<i>1.1 FIRST STEPS IN THE SOFTWARE</i>	<i>3</i>
<i>1.1.1 Installation of the software</i>	<i>3</i>
<i>1.1.2 How to install the 2D USB drivers</i>	<i>4</i>
<i>1.1.2.1 USB driver installation for operating system Windows XP & Windows 2000.....</i>	<i>4</i>
<i>1.1.2.2 USB driver installation for the operating system Windows 98</i>	<i>6</i>
<i>1.1.2.3 Check an error free installation - enter the device manager</i>	<i>7</i>
<i>1.1.3 Licensing of the 2D Kit software</i>	<i>8</i>
<i>1.1.4 Registration of the 2D Kit software</i>	<i>8</i>
<i>1.1.5 Create a new Event directory.....</i>	<i>10</i>

1. Installation of the 2D Kit system software



1.1 First steps in the software

1.1.1 Installation of the software

1. Insert the 2D-CD.
The CD starts automatically.
If this is not the case, start the "AUTORUN.EXE" on the CD manually.
2. Choose a language.
3. Select the button **<WinARace>** in the category "Software".



4. A setup wizard guides you through the installation.
All you have to do now is follow the instructions and confirm your actions (in most cases with **<Apply>**). If necessary, also enter the setup directory.
5. Anything else will be done for you by the setup wizard.



It installs all required files including demo data. You find these on the same drive your operating system is installed on, under "*..\\Racedata\\Demodata*". I. e. if your operating system is installed on drive C:, then you will find your demo files under "*C:\\Racedata\\Demodata*".

1.1.2 How to install the 2D USB drivers



The proceeding of the 2D USB driver installation depends on the operating system you use and differs therefore accordingly. At the moment we support the following operating systems: Windows 2000, Windows XP and Windows 98SE.

Please note: The appearance of the windows shown below can differ from the dialogues shown on your PC.

1.1.2.1 USB driver installation for operating system Windows XP & Windows 2000

The proceeding for the USB driver installation is very simple, if you use one of the two operating systems Windows XP or Windows 2000.

Preparation:

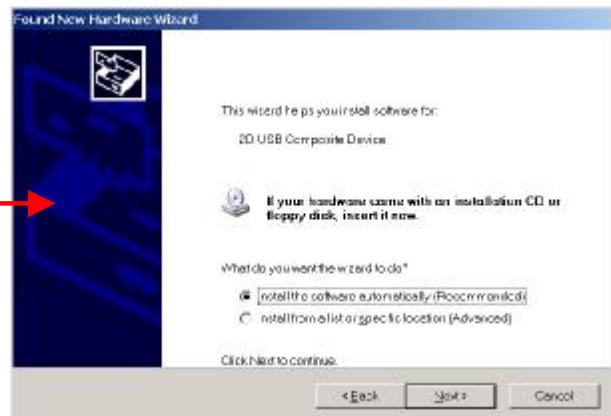
After you connect the USB connector of the Kit logger ([refer to chapter 4.1.2.1](#)) with your PC the system detects the new hardware and you must uniquely confirm some dialogs to final the USB driver installation. If you have bought a memory add-on kit, you have to always attach the USB cable to this module, instead of the kit logger !

The new "Hardware detection Wizard" will be helpful during the installation. The installation runs in two steps.

Step1: Installation of the "2D USB Composite Device"



Dialog 1: Confirm with button <Next>



Dialog 2: Confirm with button <Next>



Dialog 4: Accomplish with button <Finish>



Dialog 3: Only for Windows XP !

Confirm always with button <Continue Anyway>

Step2: Installation of the "2D USB to UART Bridge Controller"



Dialog 1: Confirm with button **<Next>**



Dialog 2: Confirm with button **<Next>**



Dialog 4: Accomplish with button **<Finish>**



Dialog 3: Only for Windows XP !
Confirm always with button **<Continue Anyway>**

1.1.2.2 USB driver installation for the operating system Windows 98



The 2D USB driver installation under the operating system Windows 98SE is more difficult as described in the chapter before.

The reason for this is that the necessary USB drivers files can't be installed via the standard kit system setup. The user must enter the directory to the necessary USB driver files manually. The necessary drivers files are on the 2D kit system CD-ROM in the following directory:

"D:\COPY_CD\DRIVERS\2D_USB" (Given D:\ is the drive letter of your CD-ROM drive)

Similarly to the preceding chapter runs the installation of the USB drivers in 2 steps:

Step1: Installation of the "USB to UART Bridge Controller"

Preparation:

First of all connect the USB connection to the Kit logger with a free USB port at your PC. If you have bought additionally a memory add-on kit then use the USB connection of this module. Your PC must detect the new USB hardware and should start the "Add New Hardware Wizard"



Dialog 1: Confirm with button <Next>



Dialog 2: Confirm with button <Next>



Dialog 4: Confirm with button <Next>



Dialog 3: Use the button <Browse> to select the following directory: "D:\COPY_CD\DRIVERS\2D_USB" (Given D:\ is the drive letter of your CD-ROM drive)



Dialog 5: Accomplish this installation step with the button **<Finish>**

Step2: Installation of the "2D USB Composite Device"



The installation of step 2 is exactly the same as described in step 1

1.1.2.3 Check an error free installation - enter the device manager

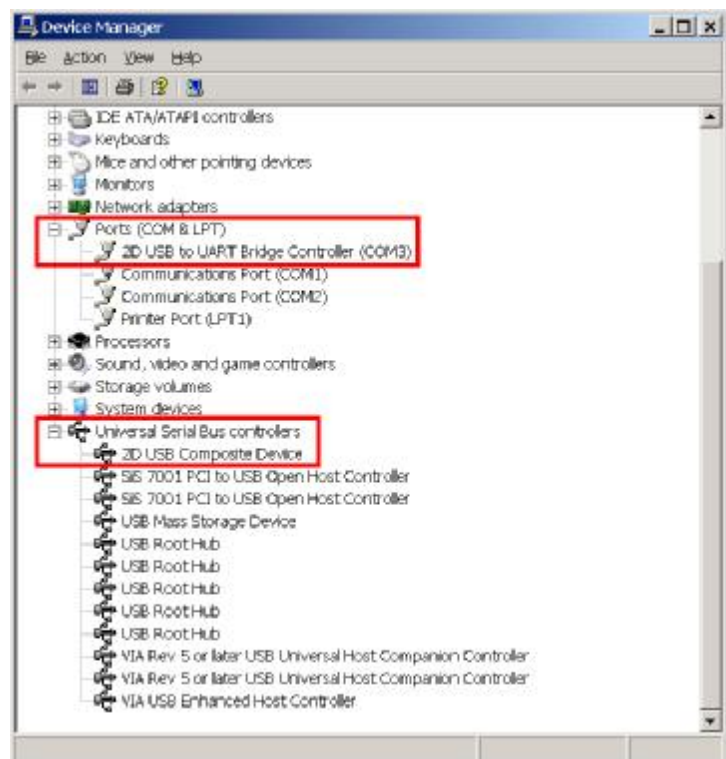
Enter the device manager

Windows XP & Windows 2000

- Right mouse click at **"My Computer"**
- Choose **"Properties"** from the context menu
- Select the rider with the caption **"Hardware"**. Click at the button with the caption **"Device Manager"**

Windows 98SE

- Right mouse click at **"My Computer"**
- Choose **"Properties"** from the context menu
- Select the rider with the caption **"Device Manager"**



1.1.3 Licensing of the 2D Kit software



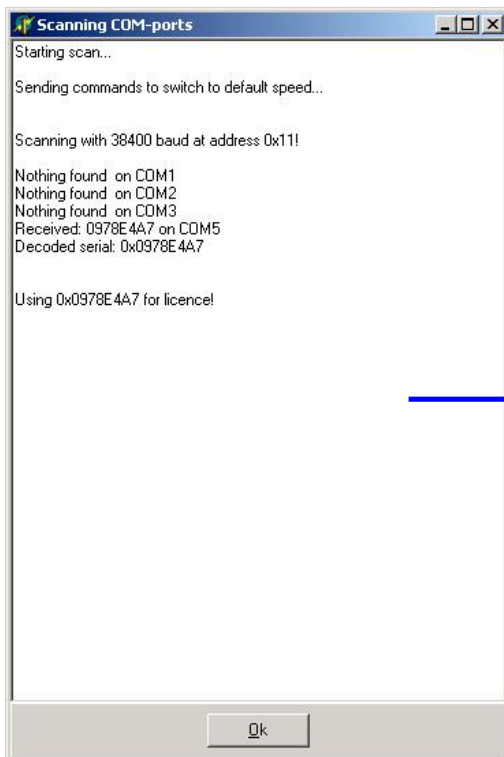
The licensing of the 2D-Kit system takes place automatically. First of all start the Front-end WinARace (icon at your desktop). Your Kit system must be online (means: voltage supply of the system must be ensured) Connect afterwards the USB cable to the USB port at your PC. If you have bought a [memory add-on kit](#) you must connect the USB cable for communication with this module. Otherwise use the USB connector at the Kit logger. [refer to chapter 4.1.2.1](#)

The "2D USB checker software" (started with WinARace) scans afterwards all available COM ports for a connected Kit logger or a memory add-on kit (left figure). Afterwards you have the chance to register the 2D Kit software (not necessary !) >> [refer chapter 5.1.4 - registration of the 2D Kit software](#)



If the software recognized the connected kit system the licensing data will be read-out and saved automatically. The user gets in case of a successfully licensing a corresponding information (refer the figure below)

1.1.4 Registration of the 2D Kit software



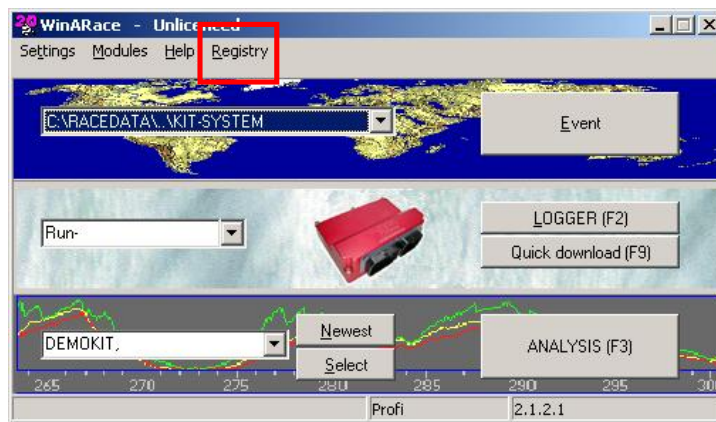
USB checker: Scanning for 2D Kit hardware



The Registration of the 2D kit software is possible but not necessary !
 In case you register the 2D Kit software you are justified to get updates and newsletter informations for your Kit software.

The Registration of the software is at any time possible over the front-end WinARace. The necessary data must be entered for this in an input window. Subsequently, these data can be sent to the 2D support via email

- First of all start our front-end WinARace (Icon at your desktop).



- Over the menu item <Registry> the registration window can be opened



In case you will register the software please fill in the following information:

- Your name
- Team / company
- Your email
- FAX No.
- Racing series

Use the button <Email> to send us an email or the button <Print Fax to 2D> to get a fax paper with all relevant software information.



Please make sure that your email adress entered correctly !

1.1.5 Create a new Event directory

You can switch to the "Event-module" by clicking on the button **<Change Event>**. In the front-end WinARace you can also create your event directory, i.e. the circuit for the weekend can be selected there. You will find the current directory on the left hand side. In this module you can also define the directory in which you want to save your data.



Always start off with this step, so that you always know where your data is saved.

To create a new Event directory you can use the button **<Create Event>** directly in the front-end tool WinARace. The following window will appear.

- Select a circuit from the list on the right hand side. The name of the selected circuit in addition with the current date will be the name of the Event directory.
- Confirm your selection with the button **<OK>**.
- No further inputs are necessary !



The software distinguishes between two different circuit sub- directories. That are:

1. The sub- directory called "**\Circuits**". This directory exists directly in your current WinARace folder. This is the default directory for all important circuits especially for all GP circuits. The software will create this directory automatically during the software installation of WinARace.
2. The sub- directory called "**\MyCircuits**". This directory exists also directly in your current WinARace folder. If you start the "Track Manager" (from the Analysis tool) the software will save all calculated race tracks into this special user directory.